

TIIG  
INJURY SURVEILLANCE IN THE NORTH WEST OF ENGLAND

West Cumberland Hospital Emergency Department

Monthly Bulletin: October 2012 to September 2013

This bulletin provides a breakdown of all injury attendances to West Cumberland Hospital Emergency Department (ED) between October 2012 and September 2013.

During these twelve months, there were 13,383 injury attendances to the ED. The month with the highest attendance was July 2013 (n=1,301) (**Figure 1**).

There were more male than female attendees presenting at the ED between October 2012 and September 2013 (males=7,231; 54%) (**Figure 1**).

**Figure 2** illustrates the age group of ED attendances for each month. Just under a third (32%) of attendances to West Cumberland Infirmary ED were aged between 30 and 59 years (n=4,343). Twenty-seven per cent of attendees were aged 15-29 years (n=3,666) and 21% aged 60 years or more (n=2,795).

The source of referral for ED attendances is detailed in **Table 1**. Over three-fifths (63%) of injury attendees self-referred (n=8,447) and just under a fifth (19%) were brought in by emergency services (n=2,492).

**Table 2** shows the injury group of ED attendances. Over three-quarters (76%) of injury attendances were recorded as other injury (n=10,135). Sports injury accounted for 11% of attendances (n=1,413), with road traffic collisions (RTCs) (n=709) and deliberate self-harm (DSH) (n=655) each accounting for 5% of presentations.

The incident location of attendances to West Cumberland Hospital is displayed in **Table 3**. The primary locations were recorded to have occurred in the home (n=5,912) or 'other location' (n=5,897), each accounting for 44% of attendances. Work (n=596), public place (n=503) and educational

establishment (n=475) each accounted for 4% of attendances.

**Table 4** displays the discharge destination for all injury attendances to West Cumberland Hospital ED. Over six in ten (61%) were discharged with no follow-up treatment required (n=8,223). Thirteen per cent were admitted to hospital (n=1,707) and 12% were referred to an outpatient clinic (n=1,652).

#### **Assault attendances**

Between October 2012 and September 2013 there were 471 assault attendances to West Cumberland Hospital ED. The month with the highest attendance was December 2012 with 61 attendances, compared to the second highest attendance (n=47) in May and July 2013 (**Figure 3**).

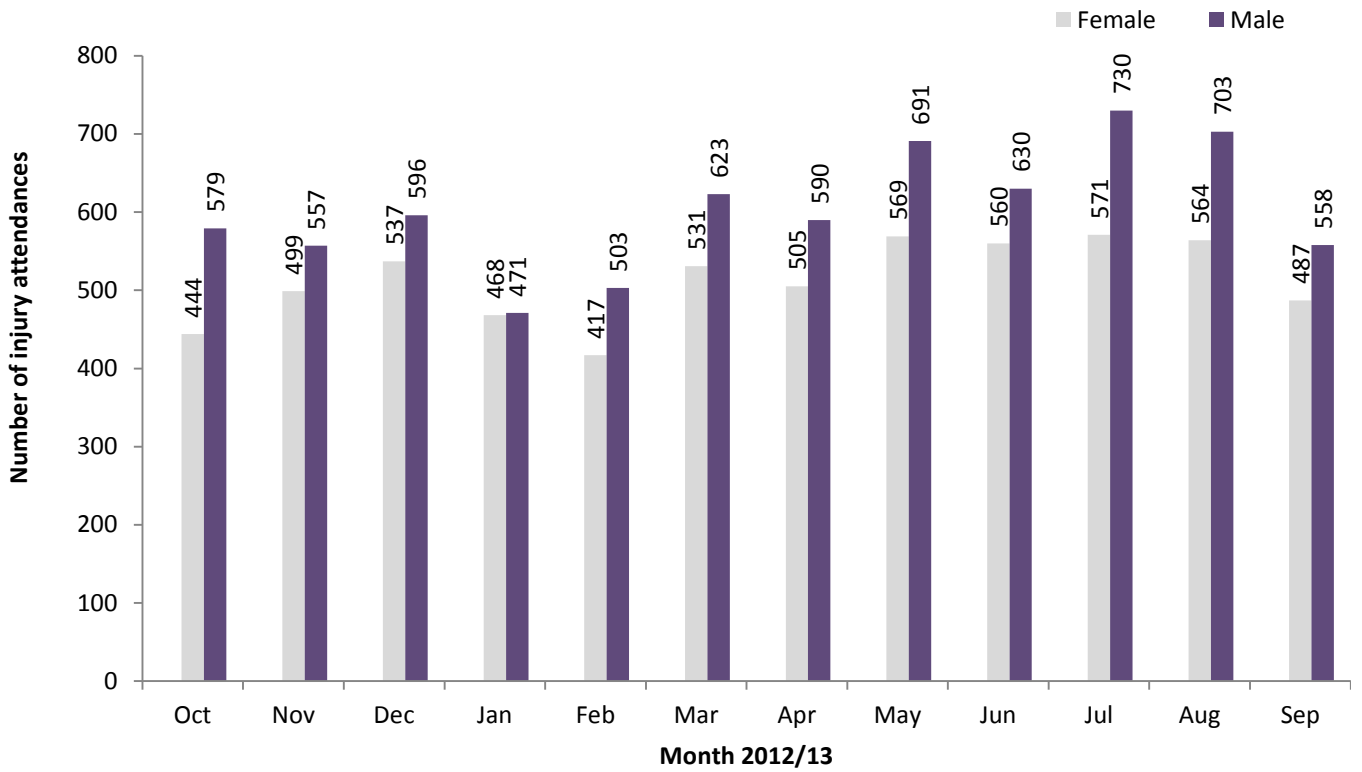
There were substantially more males than females presenting with assault-related injuries (males=341; 72%) (**Figure 3**).

**Table 5** illustrates the age group of assault attendances for each month. Over half (56%) were aged between 15 and 29 years (n=265), followed by 37% aged 30-59 (n=172).

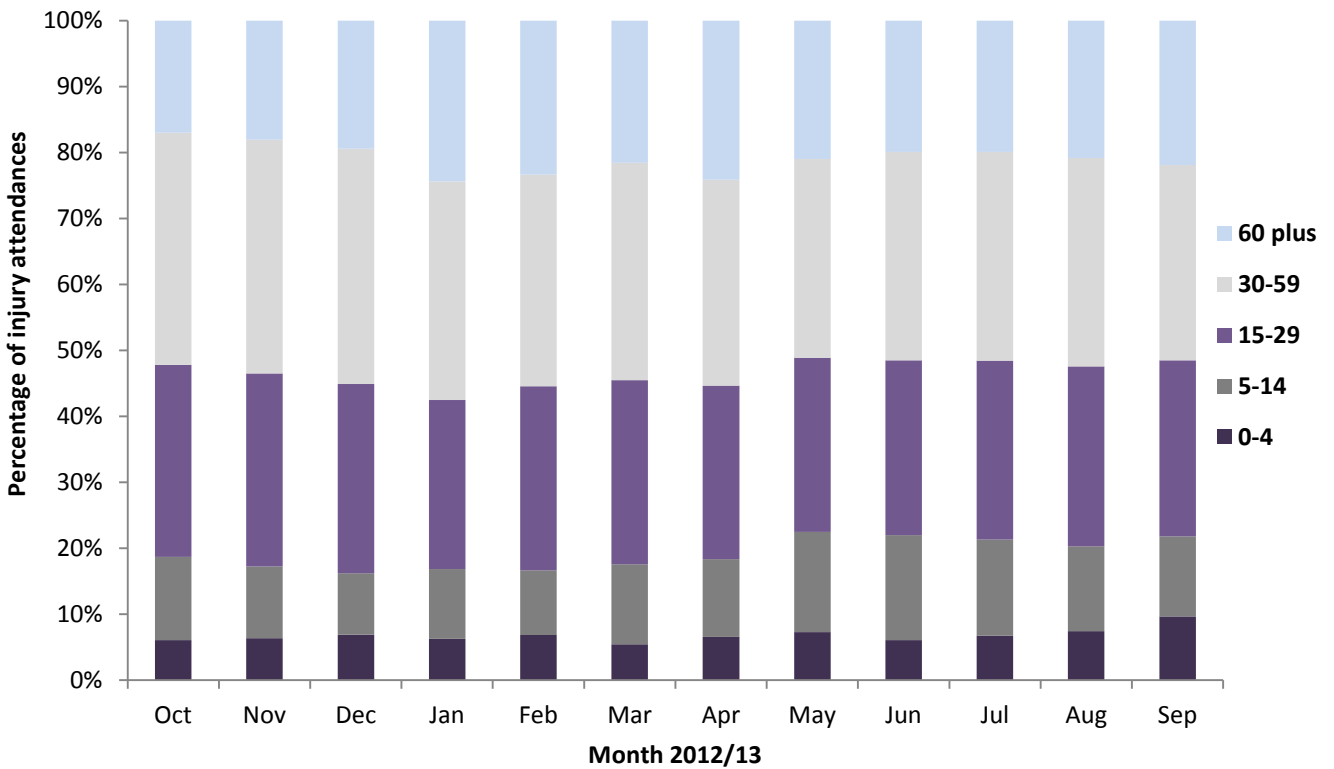
**Table 6** shows the incident location for assault attendances. Over seven in ten (71%) assaults reported to have occurred in 'other location' (n=334), with 14% at home (n=68) and 12% in a public place (n=55).

The discharge destination of assault attendances to the ED are displayed in **Table 7**. Three-fifths (60%) of attendees were discharged with no follow-up treatment required (n=282). Over a quarter (26%) required follow-up treatment (n=124) and 7% were admitted to hospital (n=35).

**Figure 1: Gender of ED injury attendances by month, October 2012 to September 2013**



**Figure 2: Age group of ED injury attendances by month, October 2012 to September 2013**



**Table 1: ED injury attendances by source of referral and month, October 2012 to September 2013**

Source of referral	Oct	Nov	Dec	Jan	Feb	Mar	Apr	May	Jun	Jul	Aug	Sep	Total	%
Self-referral	654	667	694	589	562	693	690	807	761	832	846	652	8447	63
Emergency services	192	214	242	187	183	198	188	233	216	236	215	188	2492	19
General medical practitioner	37	41	38	42	52	109	124	73	77	74	70	80	817	6
Health care provider	35	28	32	34	29	39	16	34	32	40	43	20	382	3
Other	21	19	27	28	22	23	25	47	21	32	36	29	330	2
Educational establishment	21	18	24	18	15	27	6	11	23	22	0	24	209	2
Police	10	8	17	9	11	11	9	8	12	14	15	9	133	1
Work	53	61	59	32	46	54	37	47	48	51	42	43	573	4
<b>Total</b>	<b>1023</b>	<b>1056</b>	<b>1133</b>	<b>939</b>	<b>920</b>	<b>1154</b>	<b>1095</b>	<b>1260</b>	<b>1190</b>	<b>1301</b>	<b>1267</b>	<b>1045</b>	<b>13383</b>	<b>100</b>

**Table 2: ED injury attendances by injury group and month, October 2012 to September 2013**

Injury group	Oct	Nov	Dec	Jan	Feb	Mar	Apr	May	Jun	Jul	Aug	Sep	Total	%
Other injury	752	770	874	711	678	867	841	949	911	998	981	803	10135	76
Sports injury	130	99	57	87	107	151	128	135	125	142	128	124	1413	11
RTC	40	103	84	55	54	54	49	71	51	56	50	42	709	5
DSH	62	45	57	47	52	52	49	58	65	58	66	44	655	5
Assault	39	39	61	39	29	30	28	47	38	47	42	32	471	4
<b>Total</b>	<b>1023</b>	<b>1056</b>	<b>1133</b>	<b>939</b>	<b>920</b>	<b>1154</b>	<b>1095</b>	<b>1260</b>	<b>1190</b>	<b>1301</b>	<b>1267</b>	<b>1045</b>	<b>13383</b>	<b>100</b>

**Table 3: ED injury attendances by location of incident and month, October 2012 to September 2013<sup>1</sup>**

Location	Oct	Nov	Dec	Jan	Feb	Mar	Apr	May	Jun	Jul	Aug	Sep	Total	%
Home	407	438	517	428	437	518	522	532	541	537	563	472	5912	44
Other	456	488	491	414	383	479	462	599	528	619	560	418	5897	44
Work	65	61	50	31	54	53	29	44	45	65	45	54	596	4
Public place	43	22	36	20	17	34	54	46	31	<45	<100	62	503	4
Educational establishment	52	47	39	46	29	70	28	39	45	<40	***	39	475	4
<b>Total</b>	<b>1023</b>	<b>1056</b>	<b>1133</b>	<b>939</b>	<b>920</b>	<b>1154</b>	<b>1095</b>	<b>1260</b>	<b>1190</b>	<b>1301</b>	<b>1267</b>	<b>1045</b>	<b>13383</b>	<b>100</b>

**Table 4: ED injury attendances by discharge destination and month, October 2012 to September 2013<sup>1,2</sup>**

Discharge destination	Oct	Nov	Dec	Jan	Feb	Mar	Apr	May	Jun	Jul	Aug	Sep	Total	%
Discharged - did not require any follow-up treatment	640	701	725	584	551	683	661	761	725	830	758	604	8223	61
Admitted to hospital	118	117	133	117	133	178	188	136	153	149	141	144	1707	13
Referred to other outpatient clinic	135	109	133	130	115	156	111	151	147	158	161	146	1652	12
Referred to A&E clinic	28	41	40	41	49	45	61	75	58	53	96	47	634	5
Discharged - follow-up treatment to be provided by GP	40	50	40	30	26	38	23	59	38	49	34	52	479	4
Referred to other health care professional	27	18	18	15	14	21	23	28	21	26	31	8	250	2
Left department before being treated	7	7	18	8	11	14	7	27	20	14	19	21	173	1
Other	20	8	11	8	7	8	8	13	13	11	9	12	128	1
Transferred to other health care provider	8	5	8	<10	8	11	<15	<10	<15	<10	18	<10	108	1
Left department having refused treatment	0	0	7	***	<10	0	***	***	***	***	0	***	<30	0
Died in department	0	0	0	0	***	0	0	0	0	0	0	0	***	0
<b>Total</b>	<b>1023</b>	<b>1056</b>	<b>1133</b>	<b>939</b>	<b>920</b>	<b>1154</b>	<b>1095</b>	<b>1260</b>	<b>1190</b>	<b>1301</b>	<b>1267</b>	<b>1045</b>	<b>13383</b>	<b>100</b>

<sup>1</sup> Please note that all numbers less than five have been suppressed (with \*\*\*) in line with patient confidentiality and if there is only one number less than five in a category then two numbers will be suppressed to prevent back calculations from totals.

<sup>2</sup> GP = General Practitioner.

## Assaults

Figure 3: Number of ED assault attendances by gender and month, October 2012 to September 2013

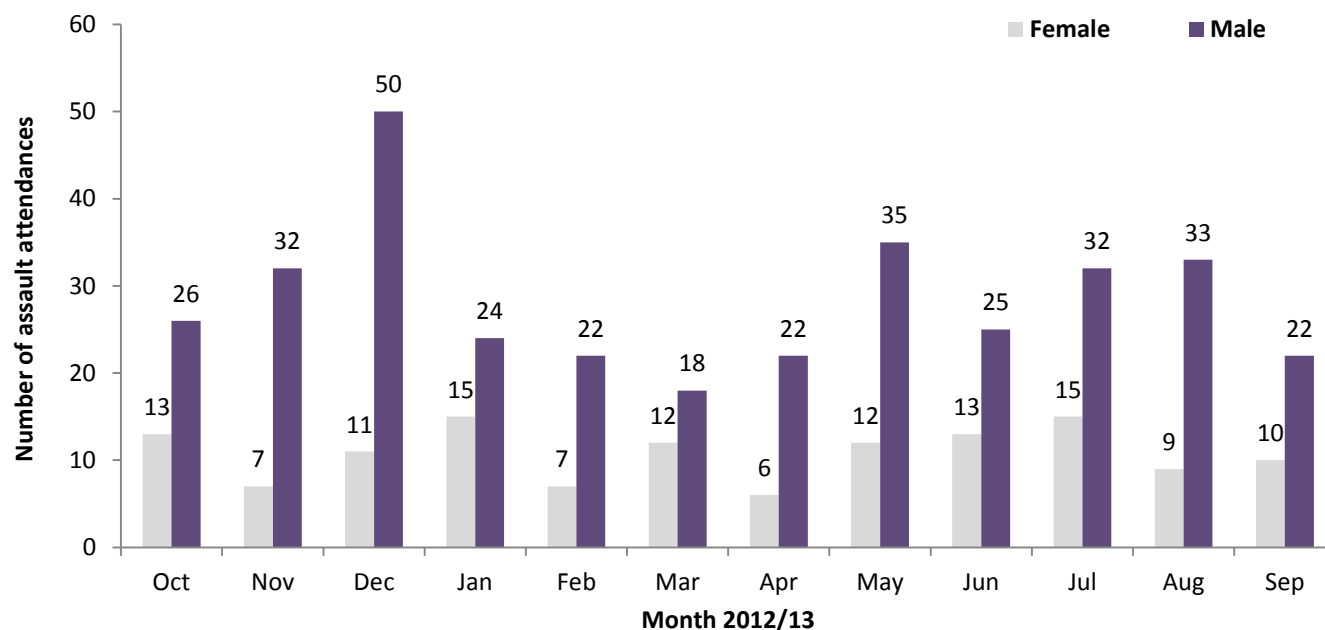


Table 5: ED assault attendances by age group and month, October 2012 to September 2013<sup>3</sup>

Age group	Oct	Nov	Dec	Jan	Feb	Mar	Apr	May	Jun	Jul	Aug	Sep	Total	%
5-14	***	***	***	0	***	***	***	***	***	***	***	***	18	4
15-29	21	18	34	19	16	23	19	31	16	24	18	26	265	56
30-59	15	19	23	20	9	***	<10	13	18	18	21	***	172	37
60 plus	***	***	***	0	***	***	0	***	***	***	***	***	16	3
<b>Total</b>	<b>39</b>	<b>39</b>	<b>61</b>	<b>39</b>	<b>29</b>	<b>30</b>	<b>28</b>	<b>47</b>	<b>38</b>	<b>47</b>	<b>42</b>	<b>32</b>	<b>471</b>	<b>100</b>

<sup>^</sup> There were no attendances in the 0-4 year category.

Table 6: ED assault attendances by location of incident and month, October 2012 to September 2013<sup>3</sup>

Location	Oct	Nov	Dec	Jan	Feb	Mar	Apr	May	Jun	Jul	Aug	Sep	Total	%
Other	25	28	40	29	24	18	16	36	29	31	35	23	334	71
Home	***	***	13	8	***	6	***	5	<10	12	***	5	68	14
Public place	8	<10	<10	***	***	***	8	6	***	***	***	***	55	12
Educational establishment	***	0	***	***	***	***	***	0	0	***	0	***	<15	3
Work	***	0	0	0	0	0	0	0	0	0	0	0	***	0
<b>Total</b>	<b>39</b>	<b>39</b>	<b>61</b>	<b>39</b>	<b>29</b>	<b>30</b>	<b>28</b>	<b>47</b>	<b>38</b>	<b>47</b>	<b>42</b>	<b>32</b>	<b>471</b>	<b>100</b>

Table 7: ED assault attendances by discharge destination and month, October 2012 to September 2013<sup>3</sup>

Discharge destination	Oct	Nov	Dec	Jan	Feb	Mar	Apr	May	Jun	Jul	Aug	Sep	Total	%
Discharged	25	25	30	18	16	23	23	25	22	29	29	17	282	60
Follow-up	<15	6	17	14	<15	5	***	18	8	10	11	10	124	26
Admitted	0	<10	<15	***	***	***	***	***	***	<10	***	***	35	7
Other	***	***	***	<10	0	***	0	***	<10	***	***	***	30	6
<b>Total</b>	<b>39</b>	<b>39</b>	<b>61</b>	<b>39</b>	<b>29</b>	<b>30</b>	<b>28</b>	<b>47</b>	<b>38</b>	<b>47</b>	<b>42</b>	<b>32</b>	<b>471</b>	<b>100</b>

Published November 2013

Karen A Critchley (née Swarbrick) – TIIG Researcher/Analyst

Centre for Public Health, Faculty of Education, Health and Community, Liverpool John Moores University,  
2nd Floor, Henry Cotton Building, Liverpool L3 2ET

T: 0151 231 4498 | E: [K.A.Swarbrick@ljmu.ac.uk](mailto:K.A.Swarbrick@ljmu.ac.uk) | W: [www.tiig.info](http://www.tiig.info) and [www.cph.org.uk](http://www.cph.org.uk)

(Please note data requests should be made through the TIIG website)

<sup>3</sup> Please note that all numbers less than five have been suppressed (with \*\*\*) in line with patient confidentiality and if there is only one number less than five in a category then two numbers will be suppressed to prevent back calculations from totals.